

Map**b**ender Workshop

Astrid Emde

Christoph Baudson

FOSS4G Barcelona 2010

Christoph Baudson

- Started hacking HTML in 1996, PHP and JavaScript in 1999, jQuery in 2007
- Joined Mapbender in 2005, now Project Chair and member of Mapbender Project Steering Committee
- Employed at WhereGroup in Bonn, Germany
- Enjoys collaboration, has experience as staff council and Scrum Master
- Regular blogger, aims to develop software at a sustainable pace

Astrid Emde

- Mapbender Developer Team since 2004
- PSC (Project Steering Committee)
- Works at [WhereGroup](#), Bonn
- Project management and development
- Trainings for MapServer, PostgreSQL/PostGIS, Mapbender, GeoServer
- Works with the OSGeo stack for many years

FOSSGIS e.V. and FOSSGIS conference

- FOSSGIS e.V.
 - Free and Open Source Software for GIS
 - German Language OSGeo Chapter
- Organization of the anual FOSSGIS conference
 - Presentations, workshops, networking
 - BoF, developer sprints
 - About 500 participants, similar to FOSS4G
 - 5. - 7. April 2011 in Heidelberg, Germany



Fairs with the Open Source Park

- Open Source Park on AGIT <http://www.agit.at/>
 - Salzburg, next AGIT 6. bis 8. Juli 2011

agit2010
SYMPOSIUM und FACHMESSE
Angewandte Geoinformatik
Salzburg, 7. bis 9. Juli

- Open Source Park on Intergeo
 - Intergeos says they are “the world’s largest event and communication platform for geodesy, geoinformation and land management“
 - 5.-7. October 2010 Cologne, Germany



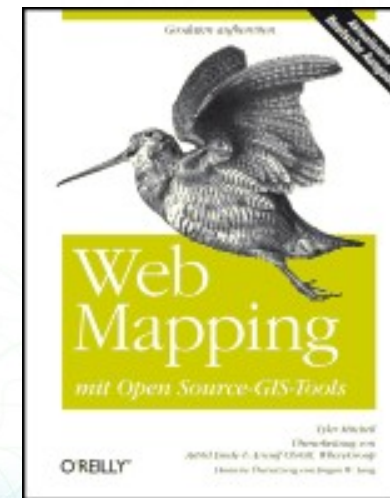
Open Source Park

- Intergeo 2009, Karlsruhe



Web Mapping Illustrated (german)

- Together with Arnulf Christl german technical translation and revision of the book Web Mapping Illustrated from Tyler Mitchell
- German Version 01/2008 Web-Mapping mit Open Source-GIS-Tools)
- ISBN 978-3-89721-723-2



Map**b**ender Workshop Structure

- **Introduction** to Map**b**ender - 30 min
- **Hands on** - 90 min
- **Outlook** - 45 min
- **Questions & answers** - 15 min

What does Mapbender do?

- Create **geospatial web applications** without writing a single line of code
- Create and maintain an **OWS repository** (focus on WMS, WFS)
- Distribute **configured services** among applications
- Grant **users and groups** access to applications and services

The Mapbender components

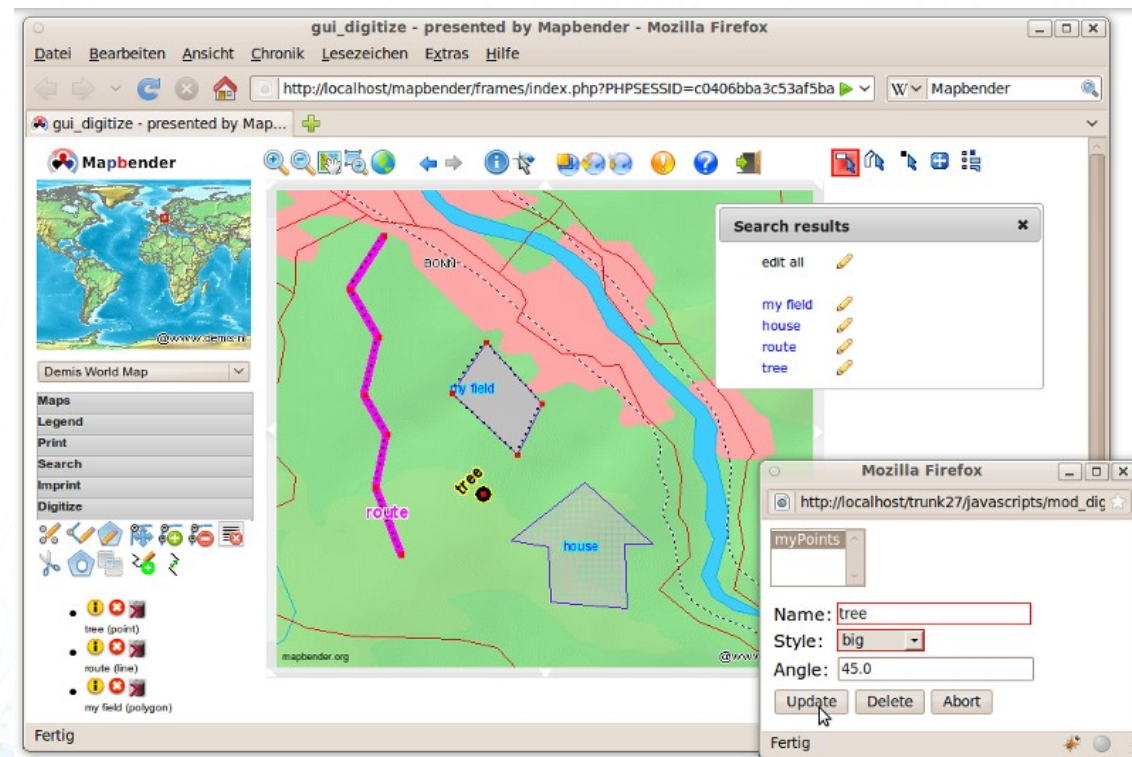
- **Applications**
- **OGC Web Services**
- **User and groups**

The Mapbender components

- **Applications**
- OGC Web Services
- User and groups

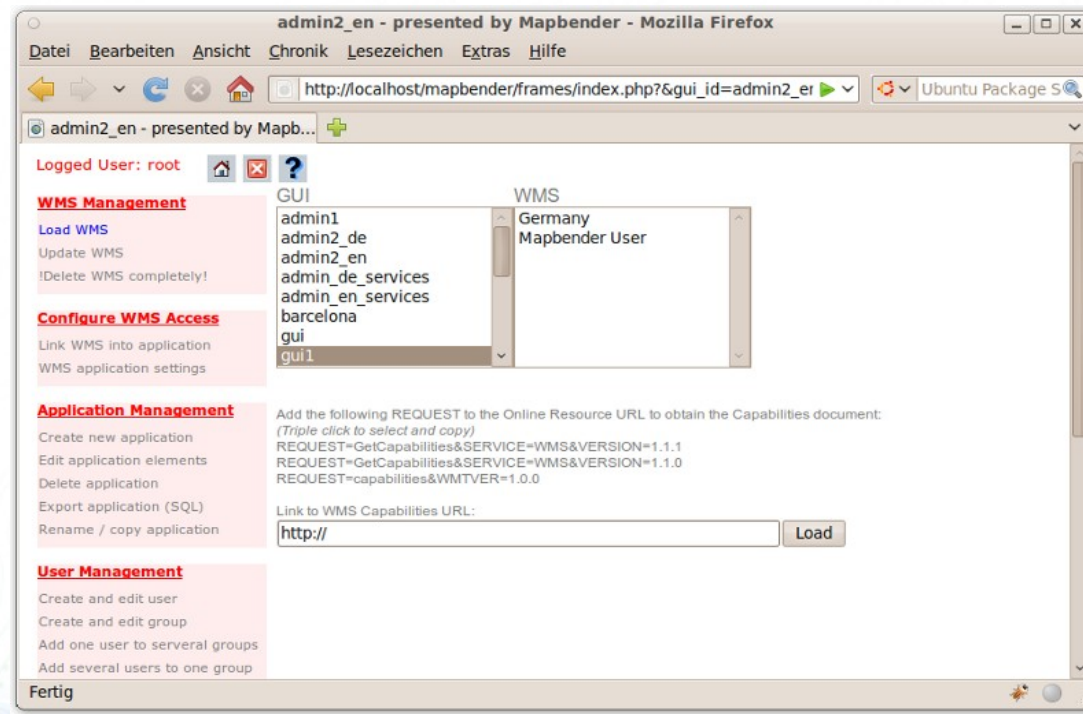
What does Mapbender do?

This is a typical Mapbender application:



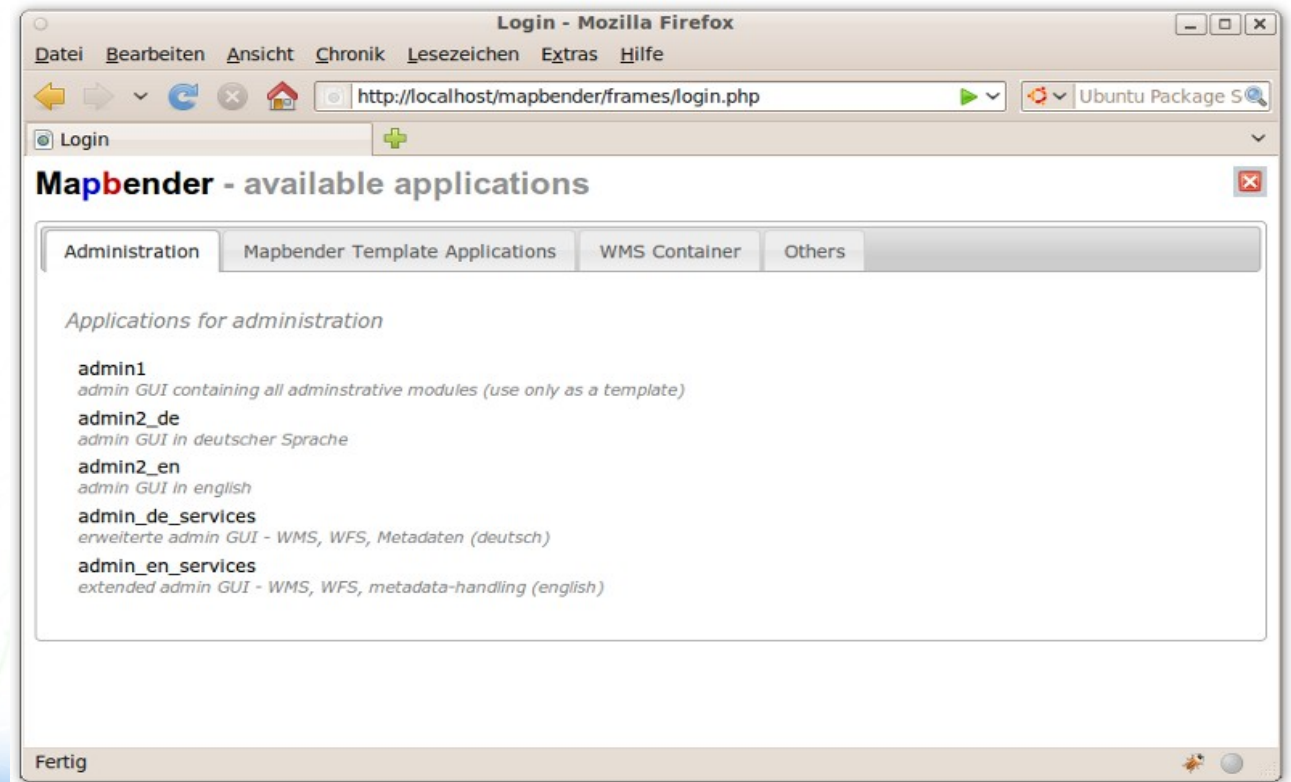
What does Mapbender do?

How is it created? By another Mapbender application!



What does Mapbender do?

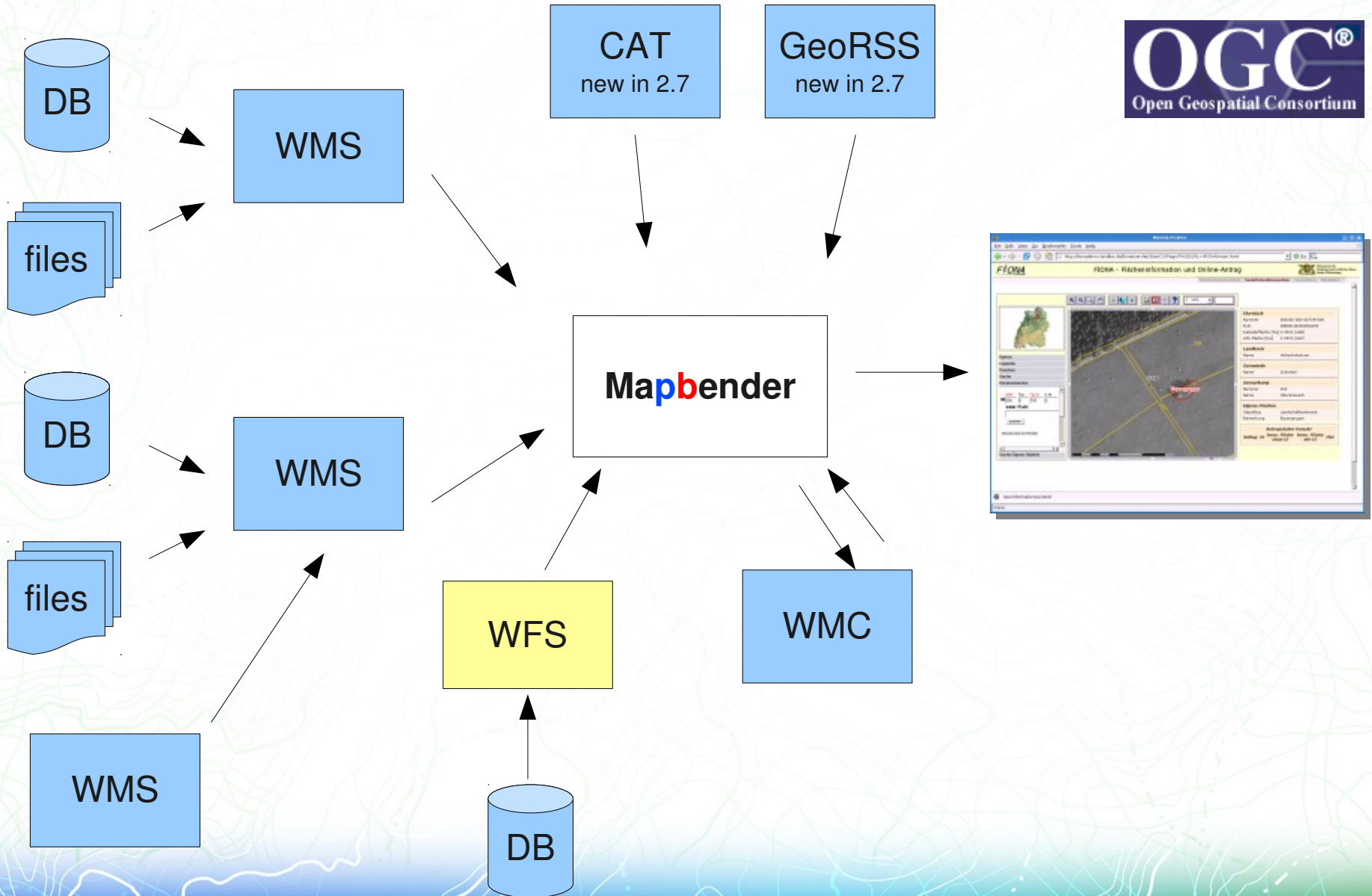
The concept is easy: Mapbender is written in Mapbender!



The Mapbender components

- Applications
- **OGC Web Services**
- User and groups

What is Mapbender ?



The Mapbender components

- Applications
- OGC Web Services
- **User and groups**

The Mapbender components

- Create **user hierarchies** with **groups** (system administrators, sub administrators, end users, etc.)
- Grant **read/write access to applications** to individual **users or groups**.
- **Read access to services** is inherited from application read access.
- **Execute rights** are dependent on the applications you are allowed to read.

Functionality

- The obvious (Map interaction, measuring, etc.)
- Template printing
- Security management
- CMS integration
- Access logging for billing systems
- Service monitoring
- Configurable search interfaces
- Extensive feature editing tools

Summary

You can create powerful geoportals without writing a single line of code:

Cómo hacer un Geoportal a partir de gvSIG en 15 minutos

<http://www.viddler.com/explore/gvsig/videos/211/>

How does Mapbender compare to other OSGeo software?

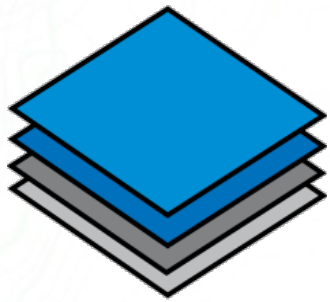
How does Mapbender compare to other OSGeo software?



Mapbender

- server software package, PHP
- used by portal administrators
- web map application deployment, service, user and access management

How does Mapbender compare to other OSGeo software?



OpenLayers

- JavaScript library
- used by web developers
- add maps to web sites and applications

How does Mapbender compare to other OSGeo software?



geomajas

- development framework, Java (GWT)
- used by geospatial software developers
- integrates powerful server side algorithms into the web browser

How does Mapbender compare to other OSGeo software?



- development framework, Python
- used by geospatial software developers
- implement web map applications and portals

How does Mapbender compare to other OSGeo software?

Want more? Join the presentation

**„A Typification of Open Source
Web Mapping Client Software and Frameworks“**

Tuesday, 16:30

Map**b**ender History

Mapbender History

2001

- project started in at CCGIS (Bonn, Germany)
- name CCGIS Client Suite, optimized for SICAD SD-IMS using WMS standards
- 1.0 release

Mapbender History

2003

- Licensed under GNU GPL License
- the name Mapbender was invented
- registration on sourceforge.net

Mapbender History

2005

- Mapbender 2.x in wide use in eGovernment applications and city maps
- First user conference (80 participants)
- Google Maps announced

Mapbender History

2006

- OSGeo founded, Mapbender is first graduated project
- OpenLayers released

Mapbender History

2007

- jQuery introduced in Mapbender
- Regular code sprints
- Regular IRC meetings

Mapbender History

2008

- Mapbender participates in Google Summer of Code
- MapFish 1.0 released
- GeoMajas registered at SourceForge

Map**b**ender History

2009

- Boost in functionality, wide usage
- Major refactoring, adoption of jQuery UI
- OpenLayers integration
- Thoughts about GeoJQuery

Mapbender History

2010

- Focus on INSPIRE, collaboration with GeoNetwork opensource, metadata solution MeTaDor
- First thoughts about Mapbender 3.0
- Mapbender on OSGeo-Live DVD 4.0.1

Project Organisation

- **OSGeo Project** <https://mapbender.osgeo.org>
- **Wiki** <http://www.mapbender.org>
- **Trac** <http://trac.osgeo.org/mapbender/report>
- **SVN** <https://svn.osgeo.org/mapbender/>
- **Mailing lists**
 - users@mapbender.osgeo.org
 - dev@mapbender.osgeo.org
- **IRC-meetings** <irc://irc.freenode.net#mapbender>
- **regular development meetings, Fairs, OSGeo**

Software Requirements

- Web Server (Apache)
- PHP > 5.1.x
- Administrative Database
 - PostgreSQL (PostGIS)
 - ~~MySQL~~
- Browser: all major browsers like
 - Mozilla Firefox
 - Internet Explorer
- gettext, ImageMagick



<http://www.mapbender.org/Installation>

Map**b**ender solutions

Mapbender in Geoportalsolutions

- Geoportals.RLP

Extensive case study



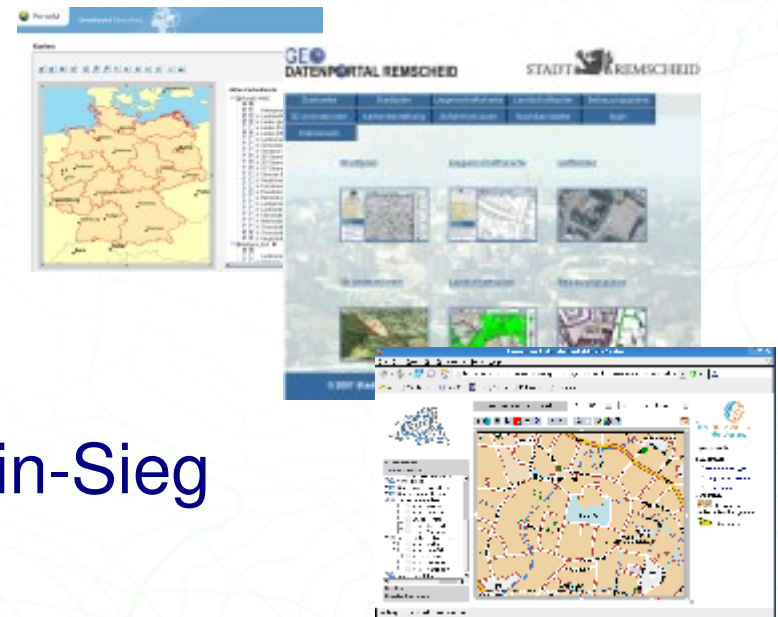
- There are many more:

PortalU, GeoPort.HRO,

Geoportals der Stadt Remscheid

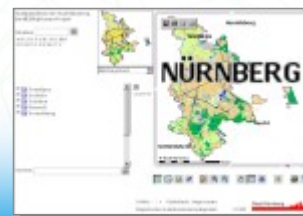
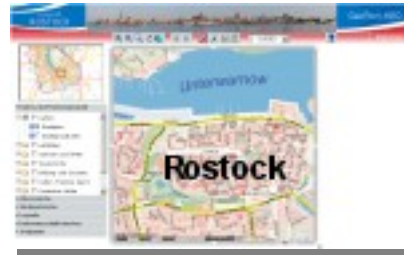
Geoportals Wohnregion Bonn-Rhein-Sieg

Geonetzwerk MÜNSTERLAND



Mapbender as a city portal

- GeoPort.HRO
- Geoportal der Stadt Remscheid
- Stadtplandienst Mainz
- Stadtplandienst Regensburg
- Portal der Gemeinde Zwischenwasser



Mapbender Solutions

- Tourenplaner RLP

- Naturpark-Scout



- FIONA - Flächeninformation und Online-Antrag

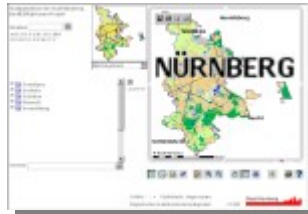
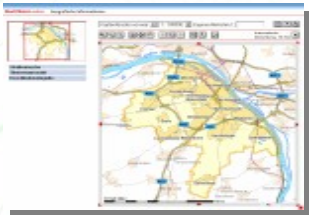
- FLORlp

- Landesarchiv Baden-Württemberg



Mapbender solutions

There is more: Take a look at the **Mapbender gallery**



<http://www.mapbender.org/Gallery>

WhereGroup

- Major Mapbender sponsor
- Company in Bonn, Germany
- Founded in January 2007 as merger of CCGIS, KARTA.GO GmbH and Geo-Consortium
- 15 employees



WhereGroup

WhereGroup

- Service provider with experience in all field of spatial data management with free software: WebGIS, SDI, database , relevant standards, trainings, conferences
- Founding member of the FOSS Academy
- Member of the OGC
- Open Source projects: Mapbender, PostNAS

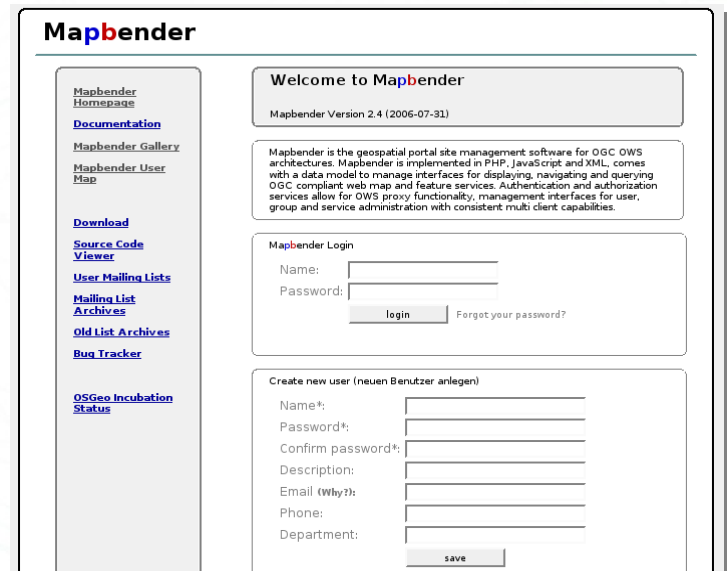
WhereGroup Projects

- Survey Office of Rhineland-Palatinate GeoPortal.rlp
- Survey Office of Baden-Württemberg: Geodatenportal
- Pollutant Release and Transfer Register
- German Hiking Association: Webbased Hiking Trail Administration
- Agency for Tourism of Rhineland-Palatinate: Cycle Route Planner for of Rhineland-Palatinate
- Archaeological Office of East Friesland

Try **Mapbender** on your own

<http://www.osgeo.org/mapbender>

<http://localhost/mapbender/>



Mapbender

[Mapbender Homepage](#)
[Documentation](#)
[Mapbender Gallery](#)
[Mapbender User Map](#)

[Download](#)
[Source Code Viewer](#)
[User Mailing Lists](#)
[Mailing List Archives](#)
[Old List Archives](#)
[Bug Tracker](#)

[OSGeo Incubation Status](#)

Welcome to Mapbender
Mapbender Version 2.4 (2006-07-31)

Mapbender is the geospatial portal site management software for OGC OWS architectures. Mapbender is implemented in PHP, JavaScript and XML, comes with a data model to manage interfaces for displaying, navigating and querying OGC compliant web map and feature services. Authentication and authorization services allow for OWS proxy functionality, management interfaces for user, group and service administration with consistent multi client capabilities.

Mapbender Login
Name:
Password:
 [Forgot your password?](#)

Create new user (neuen Benutzer anlegen)
Name*:
Password*:
Confirm password*:
Description:
Email (Why?):
Phone:
Department:

Thanks you for your attention!

If you have any question please contact us

Astrid Emde (astrid_emde@osgeo.org)

Christoph Baudson (christoph@osgeo.org)

or write to the **mapbender-users mailinglist**

mapbender-users@list.osgeo.org